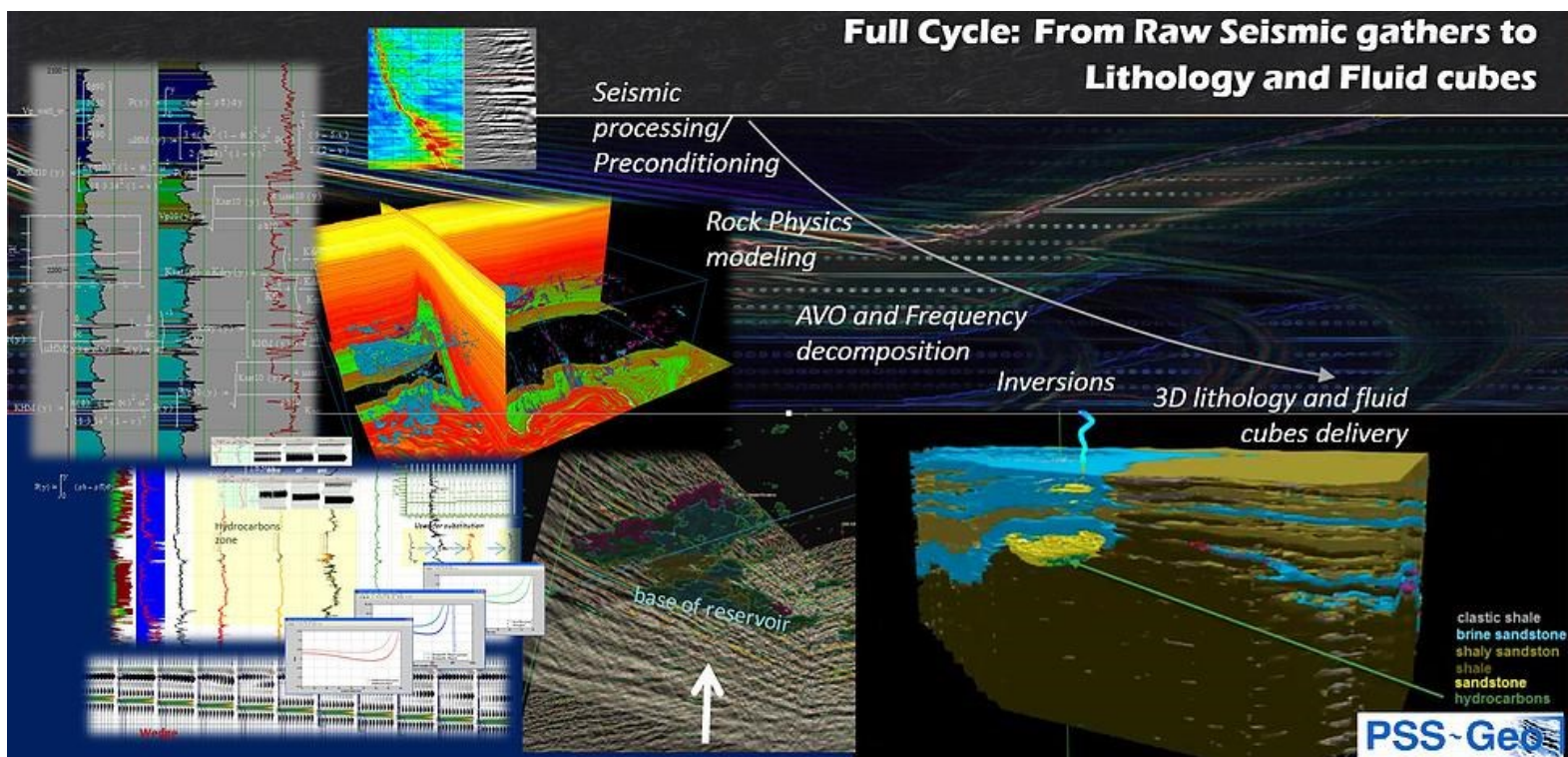


Quantitative Interpretation

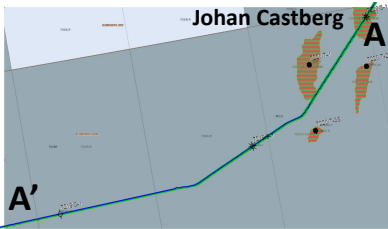
by Vita Kalashnikova

Example of fast track full QI for Johan Castberg area, Barents Sea (1 day work)

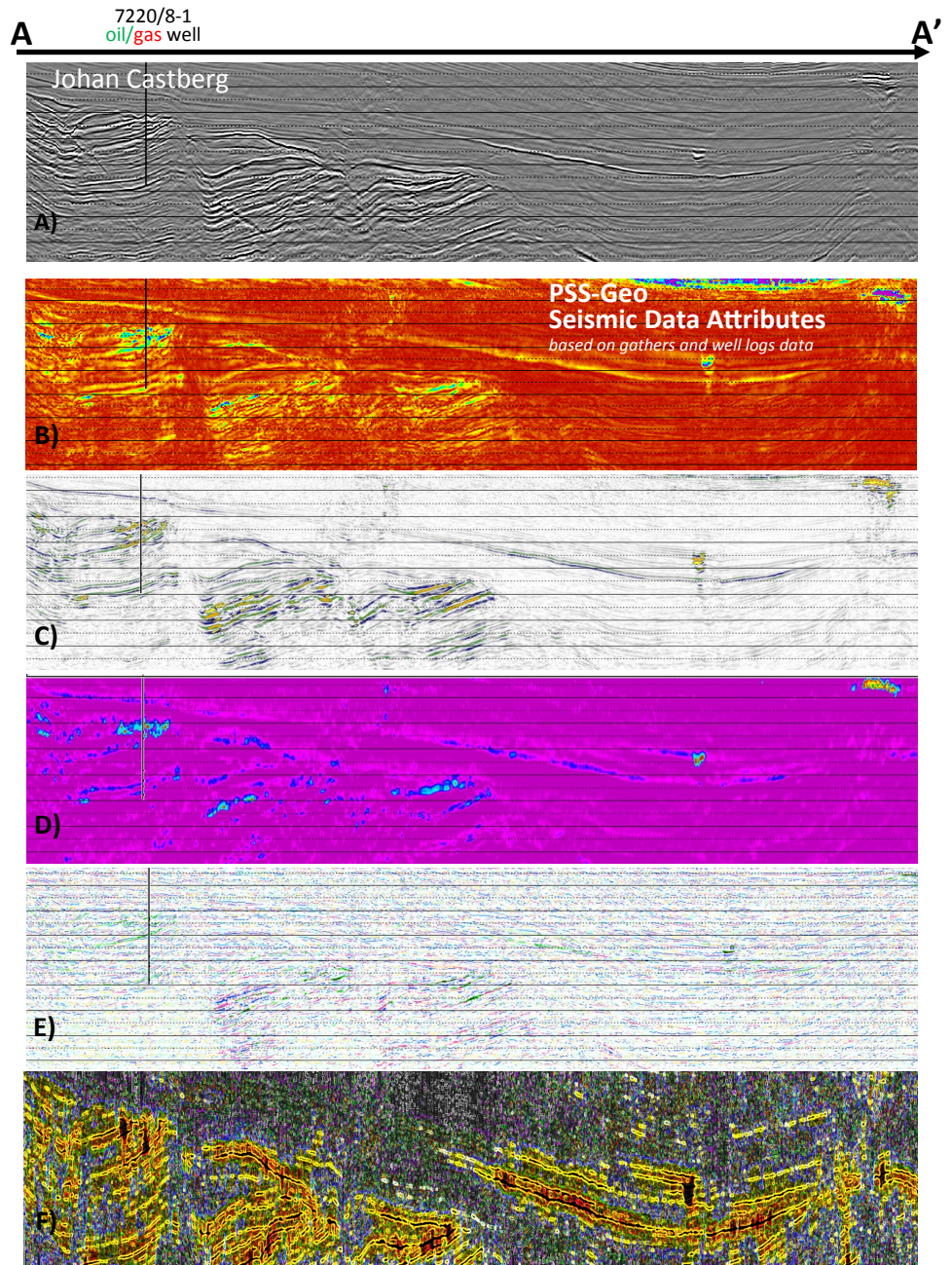


Example of fast track full QI for Johan Castberg area (1 day work)

Fast track QI based on gathers and one well data.
Performed: preconditioning, lithology based seismic
data attributes, inversion and geophysical interpreta-
tion base on rock physics templates.



- A) Full stack section with one well inserted — initial data
- B) PSS-Geo *Seismic Data Attributes*, Lithology based fluid indicator section. Possible Hydrocarbons anomalies are in purple and blue.
- C) PSS-Geo *Seismic Data Attributes*, Fluid Factor calculated based on the well data. Possible Hydrocarbons anomalies are in orange.
- D) PSS-Geo *Seismic Data Attributes*, Lithology based fluid indicator section. Possible Hydrocarbons anomalies are in blue areas.
- E) Intercept*Gradient section colored by AVO classes: Class 3 — green, base reservoir — blue., Class 2 — pink, Class 4 — yellow.
- F) PSS-Geo Prony[®] Filtering — HC indicator based on stack (black, and dark red colors).
- G) Result. Geophysical interpretation based on Seismic inversion and Rock Physic templates. Predicted reservoir layers are in yellow, possible hydrocarbons rocks are in green.



Data of MultiClient Geophysical ASA

Result

